

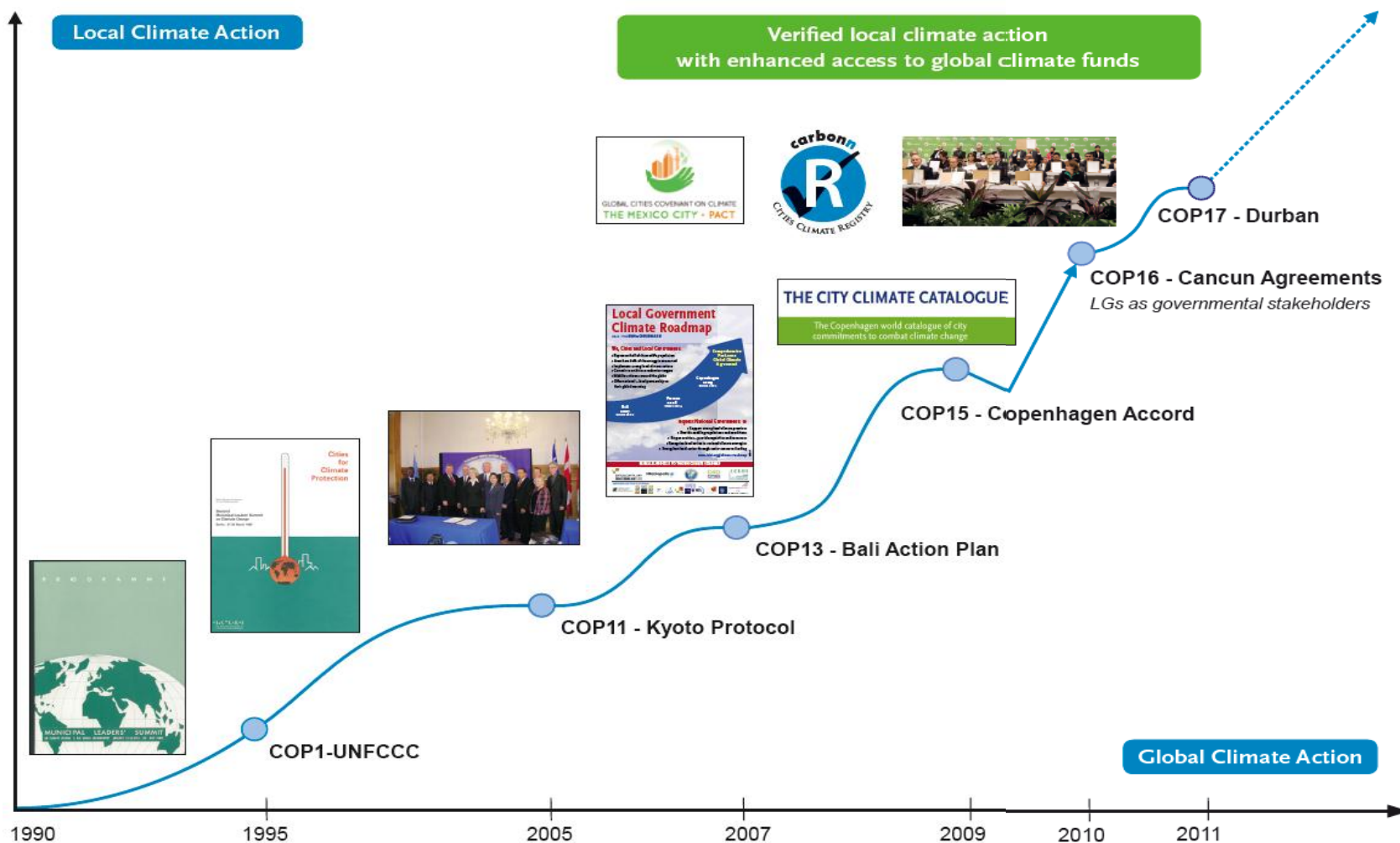
## the carbonn Cities Climate Registry (cCCR)

Local Response to  
*M*easurable, *R*eportable, *V*erifiable  
Global Climate Action

Yunus Arian  
Manager, Cities Climate Center,  
ICLEI – Local Governments for Sustainability

Tokyo, 9 February 2012

# Local climate action mirroring global efforts



# Benefits of local climate reporting

## For local governments

- Ensures transparency & accountability
- Allows comparability
- Demonstrates leadership
- Raises awareness
- Triggers action
- Opening doors for access to global climate funds

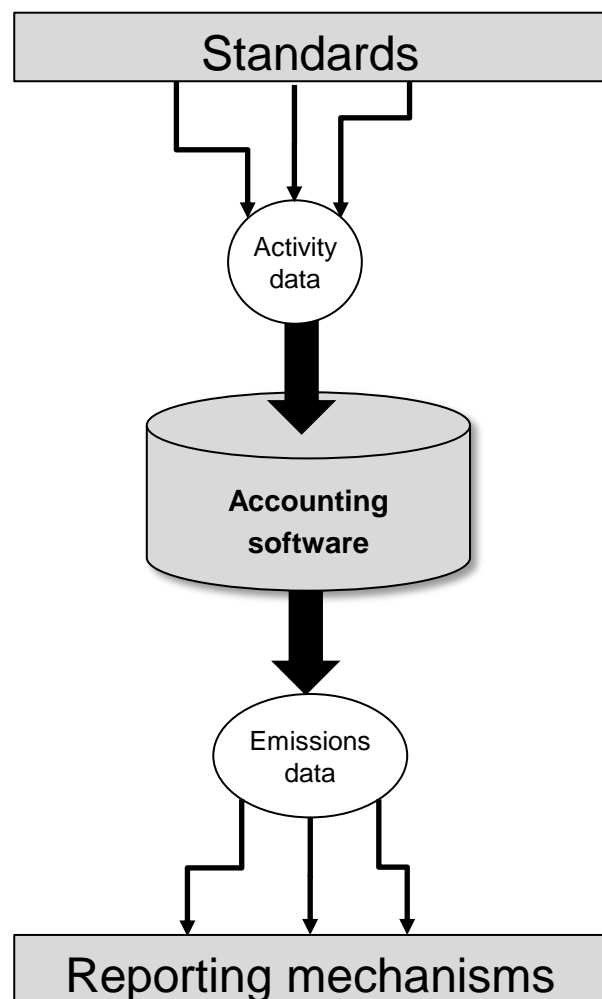
## For national governments and global climate community

- Better understanding of
  - achievements,
  - performance and
  - ambitions of LGs
- Opportunity to formulate appropriate global climate policies that enhance engagement of LGs

# Measurable, Reportable, Verifiable elements of local climate action

Commitments	Performance (GHG Emissions)	Local Climate Actions
<ul style="list-style-type: none"> <li>➤ CO<sub>2</sub></li> <li>➤ CO<sub>2</sub>e</li> <li>➤ Carbon Intensity</li> <li>➤ Renewable Energy</li> <li>➤ Energy Efficiency</li> </ul> <p>Government and/or Community level</p> <p>Absolute or Business-As-Usual</p>	<ul style="list-style-type: none"> <li>➤ Local Government emissions inventory</li> <li>➤ Community emissions inventory</li> </ul> <p>Guided by the International Local Government GHG Emissions Analysis Protocol (IEAP)</p>	<ul style="list-style-type: none"> <li>➤ Mitigation actions</li> <li>➤ Adaptation actions</li> <li>➤ Action Plans</li> </ul> <p>For completed, planned or on-going actions</p>

# Elements for local GHG emissions accounting and reporting



# Policy Framework of Global Protocol for Community Scale GHG Emissions

pursuant to ICLEI-C40 MoU on 1 June 2011



# Global Reporting Platforms: Different platforms for different stakeholders

## National Governments



## Local Governments



[illegible]

With a view to launch and follow-up on our commitments, we will enter our climate actions in the **carbonn Cities Climate Registry**. Acknowledging our common but differentiated responsibilities in responding to climate change, we agree to make our actions transparent and provide regular information and data so that our efforts can be measured, reported and verified.



**World Mayors  
Council on  
Climate Change**

United Cities and Local Governments  
Cités et Gouvernements Locaux Unis  
Ciudades y Gobiernos Locales Unidos

FUNDACIÓN  
P E N S A R  
PLANETA. POLÍTICA. PERSONA.

# Vision for a globally coordinated measurable, reportable, verifiable local climate action



**Global Cities Covenant on Climate**  
***“The Mexico City Pact”***

[www.mexicocitypact.org](http://www.mexicocitypact.org)



Political  
commitment



**carbonn Cities Climate Registry**

[www.citiesclimateregistry.org](http://www.citiesclimateregistry.org)



Reporting progress,  
Showcasing action



**carbonn**

Bonn Center for Local  
Climate Action and Reporting  
[www.carbonn.org](http://www.carbonn.org)



Technical  
support



**carbonn Cities Climate Registry**  
2011 Annual Report

*Local Response to  
Measurable, Reportable, Verifiable  
Global Climate Action*

[www.citiesclimateregistry.org](http://www.citiesclimateregistry.org)



**51** cities  
**19** countries  
**83** million inhabitants  
**447** million tCO<sub>2</sub>e/yr  
**90** GHG inventories  
**107** commitments  
**555** actions

---

**1** GLOBAL GOAL

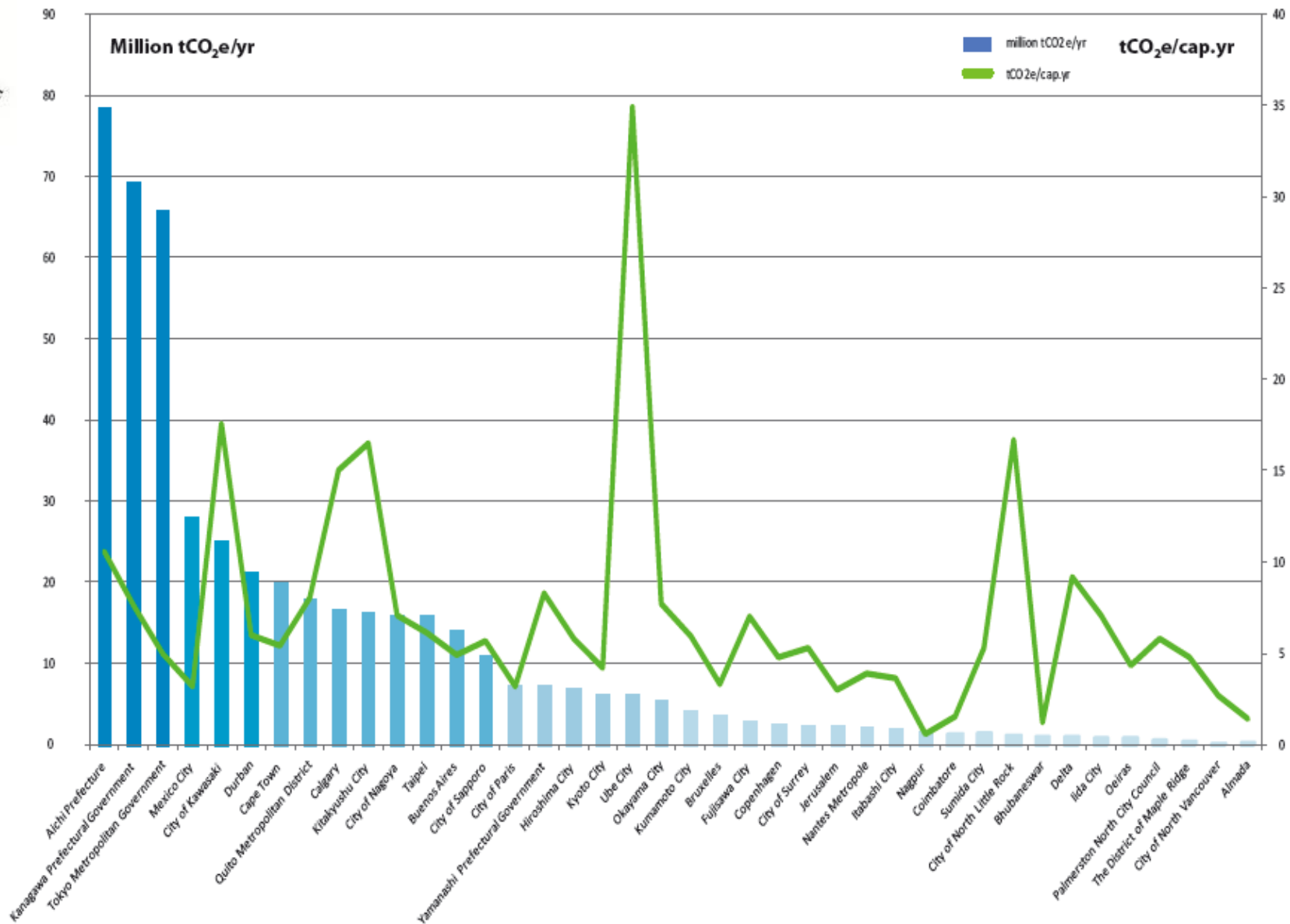


No	City/Local Government Name	Country	Population	cCCR Reporting Elements					Signatory to the MXC Pact?
				I. Reported GHG Emissions			II. # of Reported Commitments	III. # of Reported Actions and Action Plans	
				Government Emissions (tCO <sub>2</sub> e/yr)	Community Emissions (tCO <sub>2</sub> e/yr)	Community per capita GHG Emissions (tCO <sub>2</sub> e/cap.yr)			
1	Aguascalientes	Mexico	797,010	—	—	—	0	23	Yes
2	Aichi Prefecture	Japan	7,417,204	124,432	78,388,554	10.6	2	2	
3	Almada	Portugal	173,298	20,584	246,916	1.4	1	0	Yes
4	Amuwo Odofin Local Gov. Lagos State	Nigeria	1,500,000	—	—	—	1	1	
5	Bhubaneswar	India	837,737	11,436	971,473	1.2	0	3	
6	Bruxelles	Belgium	1,089,538	—	3,606,303	3.3	1	25	Yes
7	Buenos Aires	Argentina	2,890,151	789,664	14,877,048	5.1	0	35	Yes
8	Calgary	Canada	1,100,000	286,712	16,508,131	15.0	3	9	Yes
9	Cape Town	South Africa	3,700,000	219,672	19,949,346	5.4	6	7	Yes
10	City of Kawasaki	Japan	1,426,538	396,144	25,172,300	17.6	2	8	
11	City of Ligao	Philippines	108,109	—	—	—	0	17	Yes
12	City of Nagoya	Japan	2,266,249	682,589	15,989,000	7.1	2	5	Yes
13	City of North Little Rock	United States	62,304	13,383	1,098,747	16.7	1	17	Yes
14	City of North Vancouver	Canada	47,733	2,318	130,340	2.7	2	10	Yes
15	City of Paris	France	2,225,000	184,100	7,233,200	3.3	7	47	Yes
16	City of Richmond	Canada	188,100	—	—	—	1	0	
17	City of Sapporo	Japan	1,921,831	648,046	11,819,902	6.2	3	5	
18	City of Surrey	Canada	460,000	15,240	2,416,027	5.3	3	7	
19	City of Victoria	Canada	350,000	—	—	—	2	0	
20	Coimbatore	India	913,474	13,717	1,394,642	1.5	0	3	
21	Copenhagen	Denmark	528,208	97,000	2,510,035	4.8	1	7	Yes
22	Delta	Canada	100,000	7,102	917,329	9.2	2	25	Yes
23	District of West Vancouver	Canada	42,131	—	—	—	4	0	Yes
24	Durban	South Africa	3,500,000	1,074,884	21,094,816	6.0	2	50	Yes
25	Fujisawa City	Japan	413,685	—	2,896,773	7.0	1	2	Yes
26	Greater Vancouver Regional District	Canada	2,369,000	—	—	—	2	7	Yes
27	Hiroshima City	Japan	1,180,133	307,372	6,899,000	5.8	3	7	
28	Iida City	Japan	105,036	21,059	744,859	7.1	2	2	Yes
29	Itabashi city	Japan	535,759	24,168	1,947,457	3.6	2	9	Yes
30	Jeju Special Self-Governing Province	South Korea	600,000	—	—	—	1	25	Yes
31	Jerusalem	Israel	773,000	68,140	2,349,473	3.0	1	5	Yes
32	Kanagawa Prefectural Government	Japan	9,059,589	346,148	69,277,028	7.6	2	6	
33	Kitakyushu City	Japan	988,710	33,684	16,315,000	16.5	2	2	
34	Kumamoto City	Japan	723,111	199,547	4,245,000	5.9	4	5	
35	Kyoto City	Japan	1,473,656	394,000	6,185,000	4.2	3	5	Yes
36	Lautaro	Chile	35,236	—	—	—	3	8	Yes
37	Mexico City	Mexico	8,720,916	4,313,506	27,590,943	3.2	5	63	Yes
38	Nagpur	India	2,447,000	121,185	1,534,552	0.6	2	4	Yes
39	Nantes Metropole	France	580,000	—	2,076,210	3.6	1	7	Yes
40	Oeiras	Portugal	172,063	—	737,209	4.3	3	1	Yes
41	Okayama City	Japan	699,695	73,352	5,408,000	7.7	2	5	Yes
42	Palmerston North City Council	New Zealand	82,000	7,155	475,234	5.8	5	17	
43	Quezon City Government	Philippines	3,066,600	—	—	—	0	10	Yes
44	Quito Metropolitan District	Ecuador	2,239,191	—	17,892,303	8.0	1	9	Yes
45	Suwon City	South Korea	1,109,262	—	—	—	1	7	Yes
46	Sumida City	Japan	250,366	21,418	1,338,000	5.3	2	0	
47	Taipei	Chinese Taipei	2,618,772	—	15,960,500	6.1	1	19	Yes
48	The District of Maple Ridge	Canada	76,418	2,335	363,776	4.8	4	12	Yes
49	Tokyo Metropolitan Government	Japan	13,187,461	—	65,904,620	5.0	3	6	Yes
50	Ube City	Japan	173,953	45,345	6,068,863	34.9	3	3	
51	Yamanashi Prefectural Government	Japan	864,782	32,557	7,217,000	8.3	2	3	Yes
TOTAL			83,232,840	10,901,198	446,509,609		107	555	

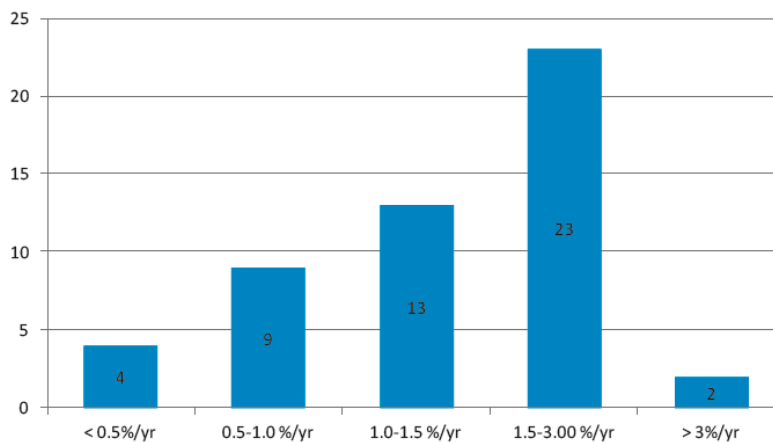
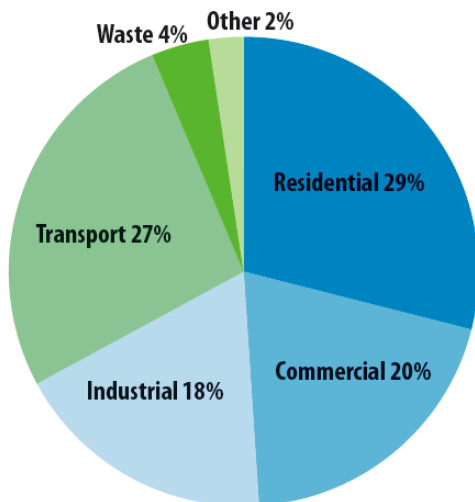
Table 1 Overview of information provided by cCCR Reporting Cities \*

© ICLEI e.V.2011

\* All information is based on non-verified data provided by city officials. Please refer to Section VI. Notes for full explanation of data compilations

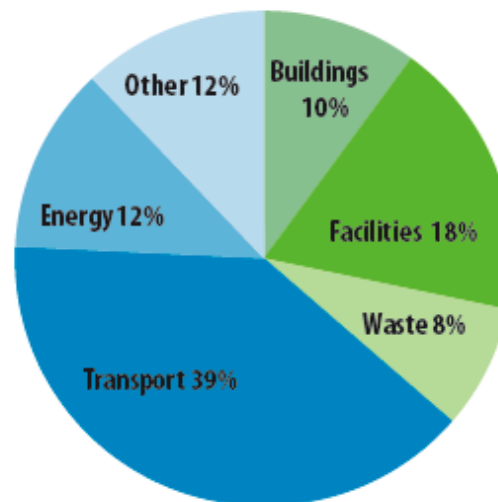
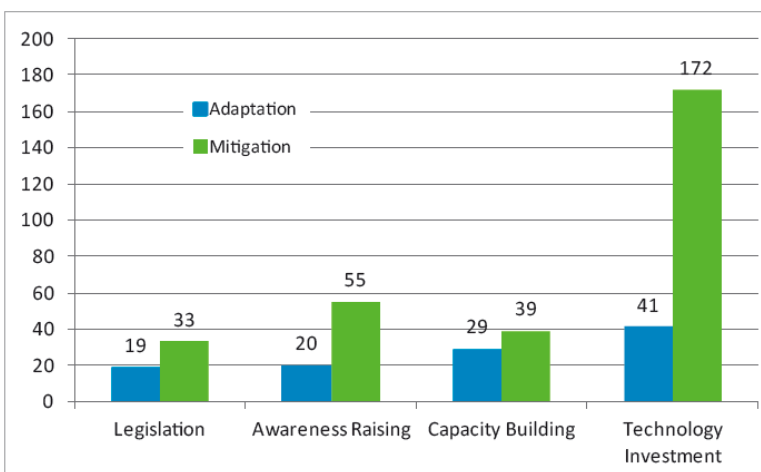


Community  
GHG emissions  
profile



Community  
GHG reduction  
commitments  
towards 2020

Portfolio  
of completed  
or In-Progress  
actions



Sectoral breakdown  
of mitigation actions  
contingent on  
financing



# Online information available at cCCR and carbonn



**carbonn Cities Climate Registry**  
*Local Climate Action the World can count on*

**carbonn Cities Climate Registry**  
**Reporting Cities**

Search For City:

City Name	Country	Commitments	Performance	Actions
Komoro City	Japan	1	2	0
Koriyama City	Japan	2	1	0
Koto City	Japan	4	2	0
Kumamoto City	Japan	4	2	4
Kurashiki City	Japan	2	2	0
Kushiro City	Japan	2	1	0
Kyoto City	Japan	3	2	4

**Kyoto City - Japan**  
**Reported Climate Information**  
**Commitments**

- Community: CO<sub>2</sub>e
- Community: CO<sub>2</sub>e
- Government: CO<sub>2</sub>e

**Actions**

- Mitigation: 3 - of which 0 are looking for funding.
- Adaptation: 1 - of which 1 are looking for funding.

**GHG Performance**

- Government Inventories: 1 (Latest in 2009)
- Community Inventories: 1 (Latest in 2008)

Please [Login](#) at [carbonn.org](#) for access to city report.

Out of 159 cCCR Reporting Cities, 36 are signatory to the Mexico City Pact.

As of November 2011, 51 cities/local authorities from 19 countries, representing more than 83 million people and responsible from average GHG emissions of more than 447 million tCO<sub>2</sub>e annually have reported 107 GHG reduction and energy commitments, 90 GHG inventories and 462 mitigation/adaptation actions and 93 action plans at carbonn Cities Climate Registry (cCCR).

To find out about how to report your local climate data and become a cCCR Reporting City, please have a look at the [User Manual for Local Government Representatives](#) (Version 2.0, August 2011).

[city commitments](#)
[city performance](#)
[city actions](#)
[about carbonn partners](#)
[orting](#)
[standards](#)
[tools](#)

**Search By Criteria**

**Search by criteria**  
Population:   
GDP per capita:   
Region:   
Geography:   
Economy:   
Country:   
Community:   
City Membership:

City Info
Commitments
Performance
Actions

CITIES	COUNTRY	CITY REPORT
<a href="#">Adachi City</a>	Japan	<a href="#">Generate City Report</a>
<a href="#">Aguascalientes Municipality</a>	Mexico	<a href="#">Generate City Report</a>
<a href="#">Aichi Prefecture</a>	Japan	<a href="#">Generate City Report</a>
<a href="#">Akashi City</a>	Japan	<a href="#">Generate City Report</a>
<a href="#">Akita City</a>	Japan	<a href="#">Generate City Report</a>
<a href="#">Akita Prefecture</a>	Japan	<a href="#">Generate City Report</a>
<a href="#">Almada</a>	Portugal	<a href="#">Generate City Report</a>
<a href="#">Amami City</a>	Japan	<a href="#">Generate City Report</a>
<a href="#">AMUWO ODOFIN LOCAL GOVERNMENT LAGOS</a>	Nigeria	<a href="#">Generate City Report</a>

# Online information available at cCCR and carbonn

## City Climate Report: Tokyo Metropolitan Government Commitments and Performance



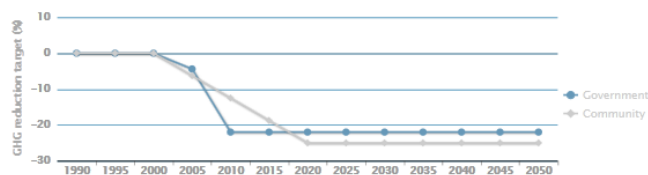
Tokyo Metropolitan Government  
Japan, Eastern Asia  
Population: 13,187,461 (2011)  
Territory Size: 2,188 km<sup>2</sup>



### Commitments

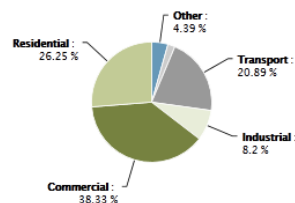
	Government	Community
CO <sub>2</sub> e reduction target:	22% by 2009 (2004)	25% by 2020 (2000)
CO <sub>2</sub> reduction target:	n/a	n/a
Carbon intensity target:	n/a	n/a
Renewable energy target:	n/a	20% by 2020 (2011)
Energy efficiency target:	n/a	n/a

Government and Community: CO<sub>2</sub>(e) targets



### Performance

Community GHG Emissions  
Total (2008): 65,904,620 tCO<sub>2</sub>e



## City Climate Report: Tokyo Metropolitan Government Actions and Action Plans



Tokyo Metropolitan Government  
Japan, Eastern Asia  
Population: 13,187,461 (2011)  
Territory Size: 2,188 km<sup>2</sup>



### Mitigation actions

Action Title	Sector	Field	Funding Source	Status
Tokyo Green Building Program	Buildings	Legislation	Local	In Progress
Tokyo Cap-and-Trade Program (Tokyo's Mandatory emission reductions and Emission Trading System)	Other	Legislation	Local	In Progress

### Adaptation actions

### Action plans

Title	Approval Date	Weblink	###II_file###
Tokyo Cap-and-Trade Program (Tokyo's Mandatory emission reductions and Emission Trading System)	2008	<a href="#">www</a>	<a href="#">download</a>
Tokyo Metropolitan Environmental Master Plan	2007	<a href="#">www</a>	<a href="#">download</a>
Action program 2011 for "Tokyo's 10 year plan"	2010	<a href="#">www</a>	<a href="#">download</a>
Tokyo's Big Change – the 10 year Plan	2006	<a href="#">www</a>	<a href="#">download</a>

Username: Dear Guest | Date: 08.02.2012

Disclaimer: This information is based on user input. Carbonn cannot be held liable for any data inaccuracy.

## Key findings:

- willingness to quantify actions and achievements (78% of cities have reported at least one GHG inventory)
- significant role in controlling global GHG emissions (with 447 mtCO<sub>2</sub>e/yr, cCCR would be ranked in the Top25 List, if all reporting cities were considered as one country)
- capacity to help raise ambitions of global GHG reductions (75% of community GHG reduction targets for 2020 exceed 1%/yr, higher than most national governments)
- mainly mobilizing their own resources but looking for additional financing as well (92% of implemented actions are financed locally)

## Future action areas:

- Engage partners to scale-up through innovative partnerships and finance
- Strengthen accountability of commitments (baseline and target year GHG emissions)
- Balancing medium (2020) and long term (2050) visions, in particular linking energy-climate commitments
- Harmonization of standards for communities and vertical integration with national inventories
- Development of globally acceptable and nationally appropriate verification models
- Strengthening the data collection and reporting capacity of cities and the cCCR



## cCCR and Japan Registry Project



- First national supplement , an important model for global-national-local partnership and synergy
- A national service of ICLEI – 120+ cities go beyond membership portfolio of ICLEI Japan Office
- Critical and unique role of ICLEI Japan
  - Linking global and national partners
  - Feeding information in local language
  - Guiding cities
- Japanese cities in cCCR
  - Largest number of cities from a single country: 30+ prefectures (~ 60%), 90+ cities (~80%, <200k)
  - > 50%, reported at least 1 government and 1 community GHG inventory
  - Total community GHG emissions: ~ 750 mtCO<sub>2</sub>e/yr (~ 60% of 2009 GHG emissions of Japan)
  - 130 community GHG reductions targets, 72% > 0.5%/yr, (greater than Japan's KP1 commitment)
- Going beyond national borders
  - demonstrating global leadership and outreach
  - encourage city-to-city for partnership for learning and investment (carbon neutrality, CDM, NAMAs)
  - Facilitate replication of the cCCR/Japan Registry model in other countries through new partnership projects supported by Japanese and other funds

“The momentum to respond to climate change is steadily growing in all areas and at all levels of society, and the first carbonn Cities Climate Registry report is a good example of this.

I am heartened by the fact that 51 cities and local authorities participated in this report, and that this effort has been undertaken with such commitment, energy and rigor.

Many other cities and local and regional administrations can be inspired to take action and to report to the carbonn Cities Climate Registry.

Just as importantly, national governments can be encouraged to take ever bigger and more ambitious steps to fight climate change.”



**United Nations**  
Framework Convention on  
Climate Change

Christiana Figueres,  
Executive Secretary

## For more information

### Visit

[www.carbonn.org](http://www.carbonn.org)  
[www.citiesclimateregistry.org](http://www.citiesclimateregistry.org)  
[www.mexicocitypact.org](http://www.mexicocitypact.org)

### Contact

[climate.center@iclei.org](mailto:climate.center@iclei.org)  
[carbonn@iclei.org](mailto:carbonn@iclei.org)